

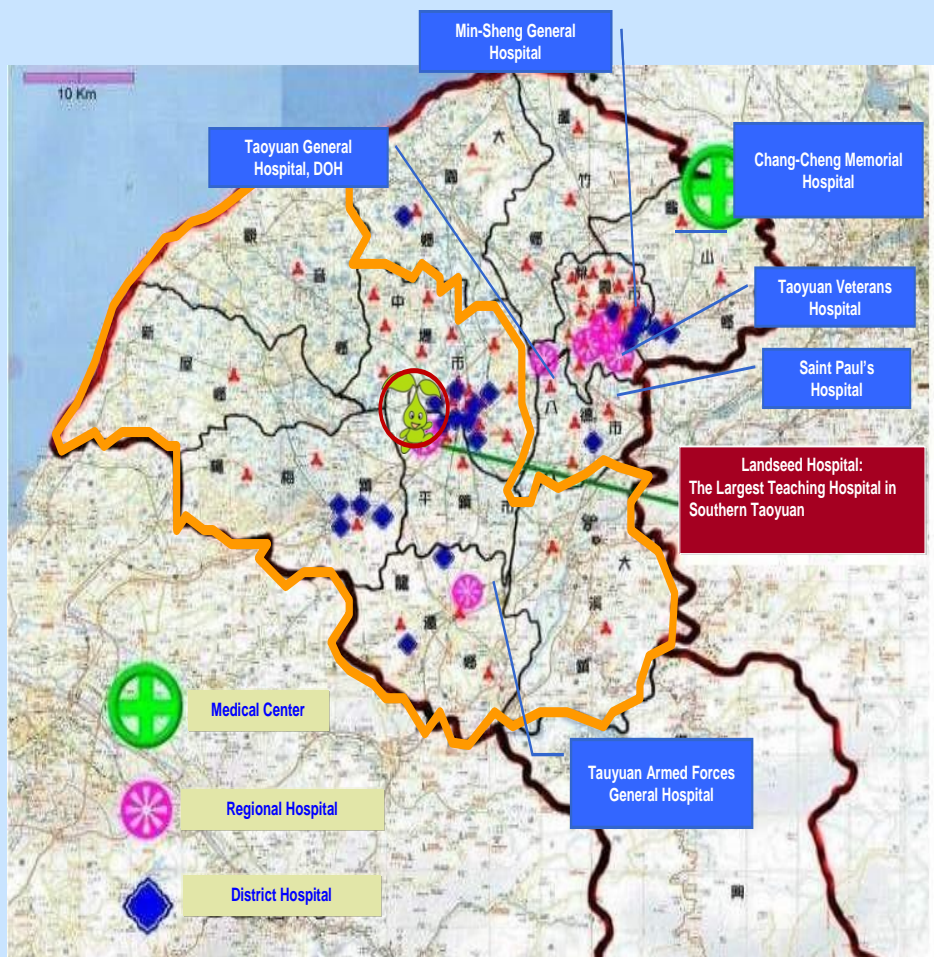
Landseed Hospital

Chen Sheng-Pyng

ENSH Gold Forum 2012

Introcuction hospital

Map of Hospitals in Taoyuan County



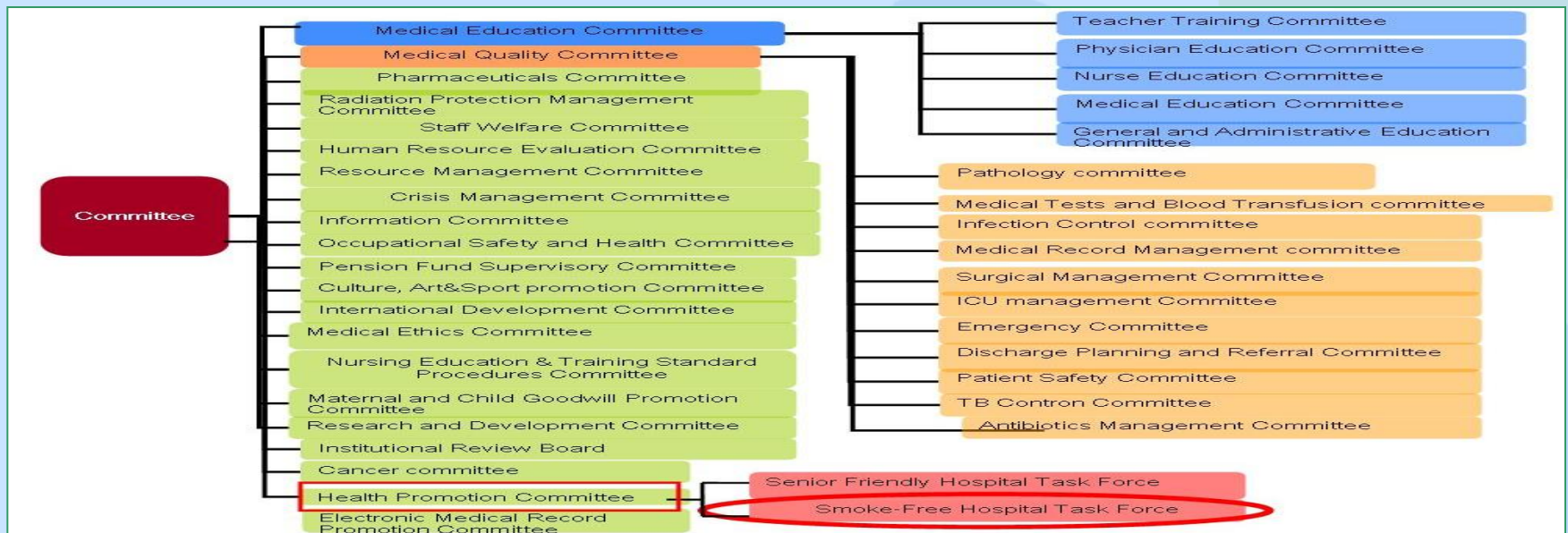
Hospital Bed Capacity

- Total Hospital Beds: 606
- Nursing Home Beds: 82

Features of Hospital Beds		Bed number
General Acute Bed	General Bed	426
	Sub-total	426
Special Bed	Respiratory Care bed	42
	ICU bed	42
	Baby bed	5
	Baby cot	20
	Surgery Recovery bed	5
	Dialysis bed	53
	Emergency Observation bed	13
	Sub-total	180
Total		606

1. Engagement & 2. Communication

- Adhere to the smoke-free environment policy strictly !
- Superintendent as the convener of the Task Force.
- Following the ENSH standards continuously.
- Refuse sponsored or commissioned by tobacco company.
- Periodic review and evaluation by HPHcommittee.
- Cross-department team including employees, patients and communities.
- Information closure by variety of communication methods.



3. Education and Training & 4. Identification and Tobacco Cessation

- Promotion, review, evaluation programs are held 1-2 times annually.
- E-learning courses are provided.
- For the purpose of advocacy for tobacco smoke-free prevention, control and motivation and training for smoking cessation.
- Teaching faculty training program for smoking cessation.
- Use of computerized information system in supporting smoker identification, referral, counseling and supporting of smoking cessation.
- The smoke-free policy has been promoted in all Departments and can easily access the counseling services.
- Our hospital provides assistance through various services and information provision to those who require help to cease smoking.
- We will hold a cohort study to improve and enhance the effectiveness of smoking cessation program in the community.

Challenges

We provided the OPD psychiatric patient the process of smoking cessation like medication and psychological support for the motivation of quitting smoking.

5. Tobacco Control & 6. Environment

- Smoking prohibited indoor and outdoor of Hospital completely.
- Security patrols to admonish for the maintenance of smoke-free working area totally.
- Labels and marks of “no smoking” are posted at all obvious places.
- Prohibit an possible inducer for smoking – ashtrays and tobacco products are banned .
- Comply the regulation that cigarettes can not be operating and seeling .
- Smokers are admonihsed to stop smoking which tasks were continuouly implemented.

Outpatient Hall



Ward Area



Hanging Gardens



The security guard patrolled and advised



7. Healthy Workplace & 8. Health Promotion

- Policy of staff healthy management and supporting systems including smoke-free workplace, No smoking-related issues are also stated in the hospital's employment contract, "smoke-free environment policy" is included in hospital's employee handbook and complete supporting system for employees' health which are identified by record.
- We set up a staff healthy management policies and supporting systems. For example, annual physical examination and physical assessment investigation etc.
- Continue the implementation for tobacco prevention & control activities in the communities.
- It will continue to implement the health promotion and smoking cessation activities with the cooperation of local communities or other partners.

9. Compliance Monitoring & 10. Policy Implementation

- The hospital continuously to update the HIS to facilitate the promotion of smoke-free policy, follow up the effectiveness and improve management quality of smoking cessation.
- The performance and outcome were monitored, analyzed and improved with the efficient use of HIS reports.
- The Department Directors implement internal communication, coordination for the maintenance of smoke-free environment
The Health Promotion Committee and the team of Smoke-Free Hospital Task Force hold a meeting every three months to discuss the administrative status of smoke-free policy.
- Self-assessment for the implementation status of smoke-free policy in accordance with the ENSH standards. Fully commit to implement all procedures and declare in the announcement on the website.
- Annual internal and external assessments then the studies and decisions are made by the Health Promotion Committee for improvements, followed by revising the hospital's tobacco prevention and control programs.



THANK YOU FOR YOUR LISTENING

ENSH Gold Forum 2012