

Asthma Prevention

成人及中老年預防系列 氣喘宣導

氣喘不能根治、但急性發作是可預防與控制的

氣喘之誘因

- 塵蟎、化學過敏原
- 藥物、花粉、病毒感染
- 室內室外的空氣污染原
- 環境的溫度或溼度的改變
- 冷空氣、運動和強烈的情緒變化等

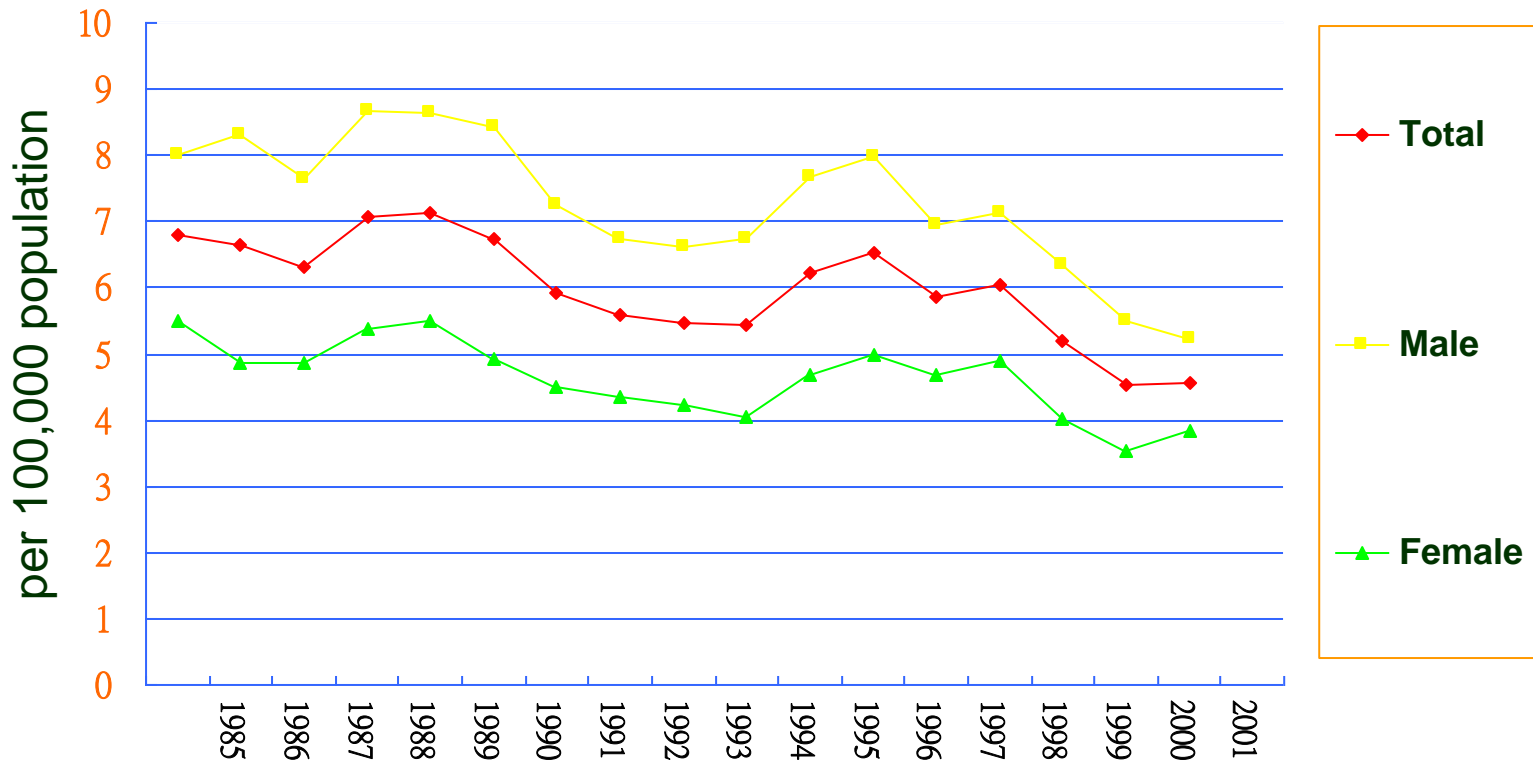
 行政院衛生署國民健康局 關心您



Overview

- The death rate of bronchitis, emphysema and asthma marching the 10th leading cause of death in Taiwan
- the children asthma incidence increasing continuously
- The medical expense of bronchitis, emphysema and asthma is NT\$ 3.6 billion in 2000 which amounts 12.67% of the total medical expense

Mortality of asthma



The increasing children asthma incidence

		1974	1985	1996	1996	2002
Age		7–15	7 – 15	6 – 7	13 –14	6 – 7
%	male	1.45	5.99			24.1
	female	1.15	4.17			15.0
	total	1.3	5.07	12.7	9	19.8

Strategy

- Enhance the asthma health education
- Promote the asthma counseling service
- Promote the asthma care personnel training
- Implement the asthma case management program
- Conduct the asthma epidemiological research

Enhance the asthma education

- Following the World Asthma Day, the month of May is made month of asthma
 - asthma education campaign was launched by integrating the resource of all the public and private health sectors and organizations
- Produce the asthma education materials
 - Booklets, fact sheets, posters, video, etc...
- Use the multiple promotion channels such television, broadcast, newspaper, and internet, etc...

Promote the asthma counseling service

- Implement the outpatient asthma education program
- Establish the asthma clinical guideline
- Continuous education for the medical professional personnel
- Asthma children summer camps and carnivals
- Outpatient poster education

Promote the asthma care personnel training

- Conduct asthma care training for:
 - primary and junior high school nurses
 - nurses from the health bureaus and health centers
 - primary and junior high school teachers



Implement the Asthma case management program

- Establish the asthma case management model by integrating the parents health education, home visiting and school health
- Publish the asthma care standard handbook following the principle of school health

Conduct the asthma epidemiological research

- Conduct the children asthma incidence and prevalence survey
- Conduct the adult asthma prevalence survey