



**Yonghe Cardinal Tien Hospital
(Cardinal Tien Hospital Yonghe Branch)**

Reporter : Hung Ling-Yu 2014.04.23

ENSH Gold Forum 2014

Introduction of Hospital

HISTORICAL DEVELOPMENT



1959

a group of ICM sisters from Belgium set up a dispensary in Taipei City.

1962

the Saint Joseph Hospital was inaugurated.

1981

The Saint Joseph Hospital became the Cardinal Tien Hospital Yonghe Branch.

Our Values, Missions, and Goals



Values

Love God and People Respect Life



Missions

**Transmit God's Love-
Through Medical Care
Communicate Christ's Loving Spirit**



Goals

The goals of our hospital, to be a model of community hospital, health promotion and long term care services, are modified in the strategy planning conference.

Hospital basic information



Cardinal Tien Hospital
 Yonghe Branch



District and Teaching hospital

Total beds : 338

Staff numbers : 668

Service quantity

Average of Clinical Visits	41,011
Average of Emergency Visits	3,289
Average of Inpatient Visits	5,114

Session I

Making tobacco free policy according to ENSH standard



**Annual
administration
meeting**

Making hospital
tobacco free
policy



HPH committee

Making annual
tobacco control
plan

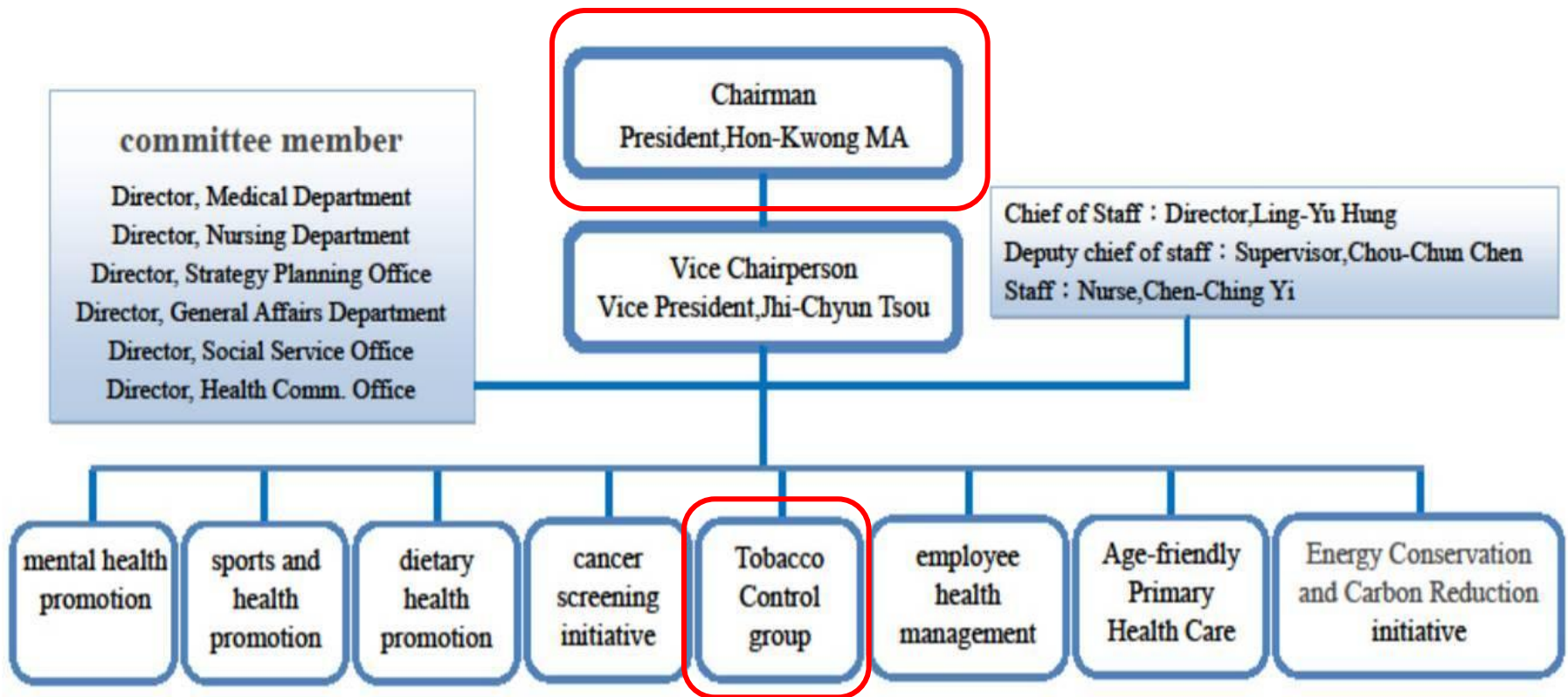


**Tobacco free
work team**

Executing
tobacco control
plan

Set up HPH committee

Yonghe Cardinal Tien hospital health promotion Committee



Tobacco free policy propaganda

Committee meeting



Community meeting



Campus lecture



Hospital website



Screen wall



Hospital newsletter



Session II

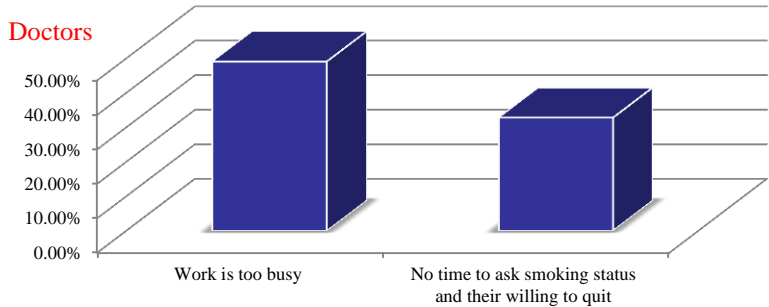
Smoking cessation referral program -1

Questionnaire for medical staff and smokers about barriers of smoking cessation referral in 2012

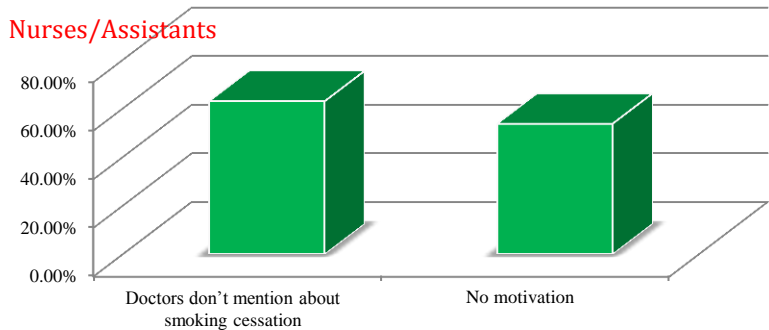
Factors that stop medical staffs to help patients to quit smoking

Doctors (N=55)	No.(%)	Nurses/Assistants (N=54)	No.(%)
Work is too busy	27 (49.09%)	Doctors don't mention about smoking cessation	34 (62.96%)
No time to ask smoking status and their willing to quit	18 (32.73%)	No motivation	29 (53.70%)

Doctors



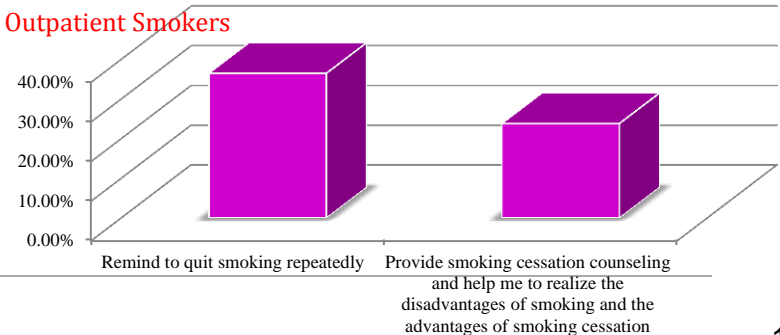
Nurses/Assistants



Factors that reinforce smokers to quit smoking

Outpatient Smokers (N=704)	No. (%)
Remind to quit smoking repeatedly	256 (36.47%)
Provide smoking cessation counseling and help me to realize the disadvantages of smoking and the advantages of smoking cessation	167 (23.79 %)

Outpatient Smokers



Smoking cessation referral program -2

Strategy 1
Emphasis the importance of tobacco free policy

Strategy 2
Reinforce doctors' willingness to refer patients

Strategy 3
Reinforce nurses/ assistants' willingness to refer patients

Strategy 4
Set up referral SOP



Continuing education for staffs



Announce the results at Hospital Affairs Meeting every month



Lectures for outpatients



Hospital website about smoking cessation information



Referral incentives program for nurses/assistants



Referral program and referral sheet

Smoking cessation referral program -3

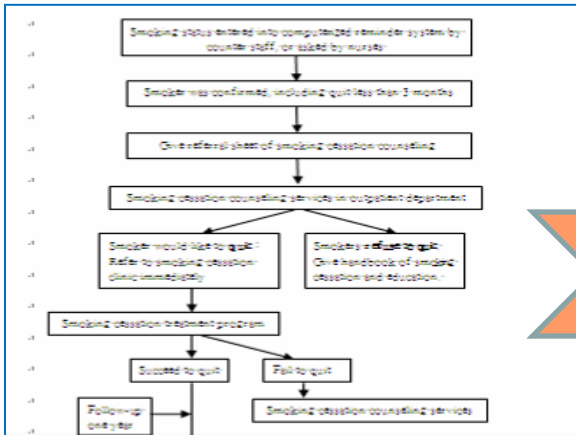
Out-patient referrals for smoking cessation

	2012			2013		
	health counseling	smoking cessation Outpatient Clinic	total	health counseling	smoking cessation outpatient Clinic	total
Medicine	163	31	194	137	89	137
Pulmonary	25	3	28	14	2	14
Endocrinology	18	2	20	7	1	7

In-patient referrals for smoking cessation

	2012			2013		
	health counseling	smoking cessation Outpatient Clinic	total	health counseling	smoking cessation Outpatient Clinic	total
Orthopedics	9	6	15	39	8	50
Surgery	3	1	4	30	2	34
Pulmonary	12	4	16	15	7	27

Referral program of smoking cessation counseling and treatment



Set up smoking cessation referral SOP

Medical staffs fill out the referral sheet

All the SC activities will record on the medical records



Smoking cessation educators provide one-to-one counseling



Combine with smoking cessation treatment if necessary



Employee smoking cessation program

	Participants of smokers	Quit smoking successfully
2010	1	0
2011	4	0
2012	2	1
2013	10	2

Smoking cessation class

On-Site Smoking Cessation Counseling Service For Staffs in 2013	
Number of counseling	33
Number of people to receive SC treatment	3
Decrease the amount of smoking	1
Quit successfully	2



戒菸不孤單 關懷隨身伴
員工戒菸活動開跑!

期間：即日起~11月30日
對象：本院之吸菸同仁
方式：本院專業戒菸衛教師主動出擊

獎勵：

- 員工（含外展機構正職同仁），至本院戒菸門診就診，前8位向戒菸衛教師報名者，費用由醫院全額補助
- 戒菸成功者將頒發5000元獎金



Session III

Promote community tobacco hazards prevention-1

Smoking cessation programs on campus

	2013
Period	9/16-1/18
School	Fuhe Junior High School
Lectures	9
Participants	10
No. of quit successfully	7



Mindfulness smoking cessation group set up by Mindfulness-Based Stress Reduction workplace, smoking cessation educators and Fuhe Junior High School in 2013, the smoking cessation courses develop body sense, build interpersonal relationship and increase the skill of tobacco hazards prevention.

Promote community tobacco hazards prevention-2

Smoking cessation counselling service of community

	Sessions	Participants
2011	7	1,363
2012	7	806
2013	13	772



Oral Cancer Screening Service



Carbon Monoxide monitoring



Medical groups provide information on smoking cessation



Tobacco control lectures



Health education on smoking cessation

Promote community tobacco hazards prevention-3



Smoke-free parade during Chinese New Year



Smoke-free announcement at hospital annual Party



Smoke-free community cleaning activity



Volunteer training courses for tobacco and betel nut control



Community tobacco control promotion



Students give the performance of smoking cessation

Thank you for your attention!

ENSH Gold Forum 2014